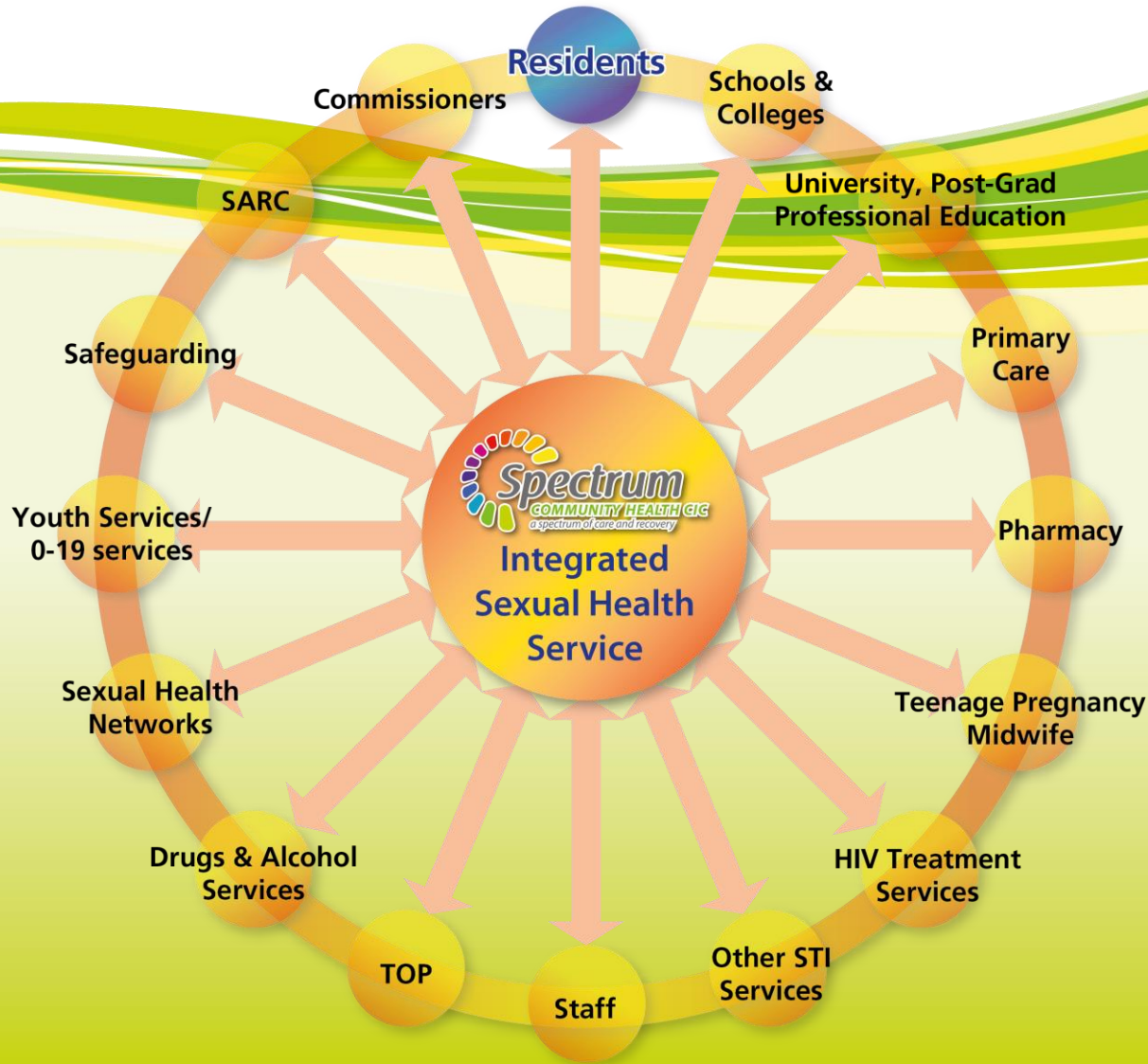


# About Spectrum

- **Not-for-Profit Social Enterprise (NHS 'Spin out')**
  - Employee-led, Values-driven, over 600 staff across the North of England
- **Three complimentary business units**
  - Sexual Health
  - Substance Misuse
  - Health and Justice
- **Passion to make a difference for vulnerable people**
- **Senior clinical leaders with years of NHS experience in challenging and complex environments**
- **Host of two UK Registered Charities - Spectrum People and the Transform Research Alliance**



# Partnerships & Stakeholders

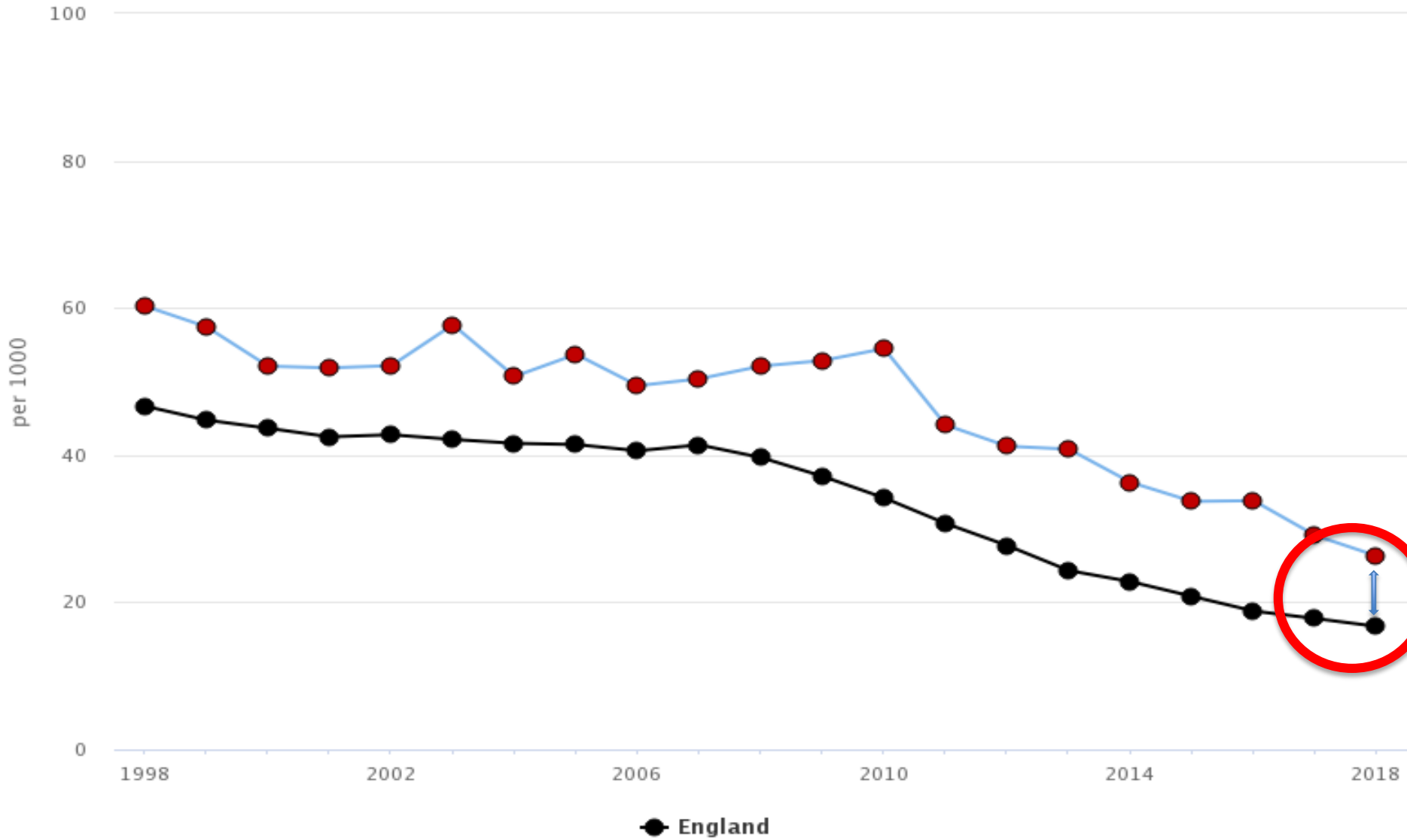


[www.spectrumhealth.org.uk](http://www.spectrumhealth.org.uk)  
[info@spectrum-cic.nhs.uk](mailto:info@spectrum-cic.nhs.uk)



Compared with benchmark: ● Better ● Similar ● Worse ○ Not compared

### Under 18s conception rate / 1,000 for Barnsley

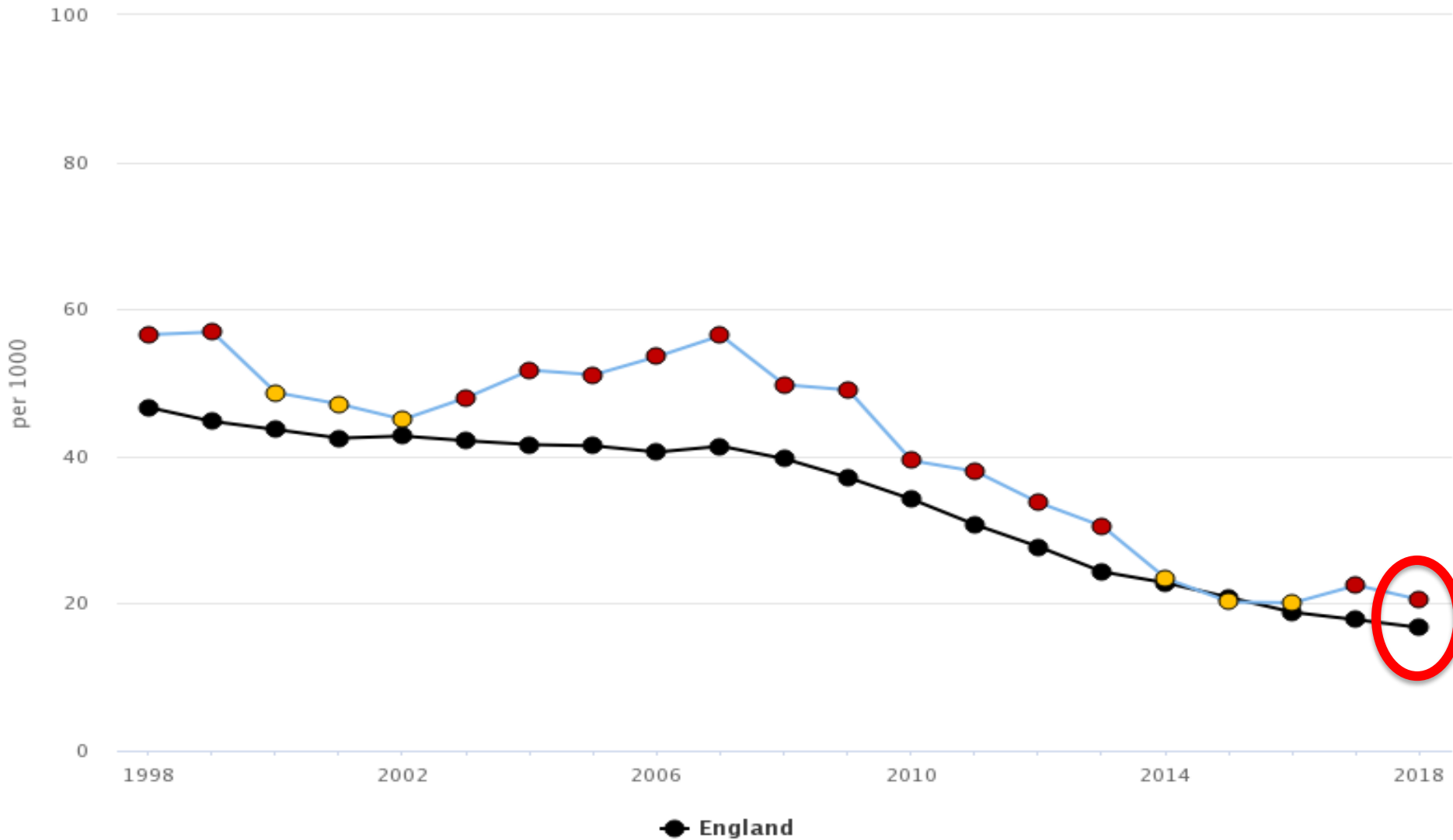


[www.spectrumhealth.org.uk](http://www.spectrumhealth.org.uk)  
[info@spectrum-cic.nhs.uk](mailto:info@spectrum-cic.nhs.uk)



Compared with benchmark: ● Better ● Similar ● Worse ○ Not compared

### Under 18s conception rate / 1,000 for Wakefield

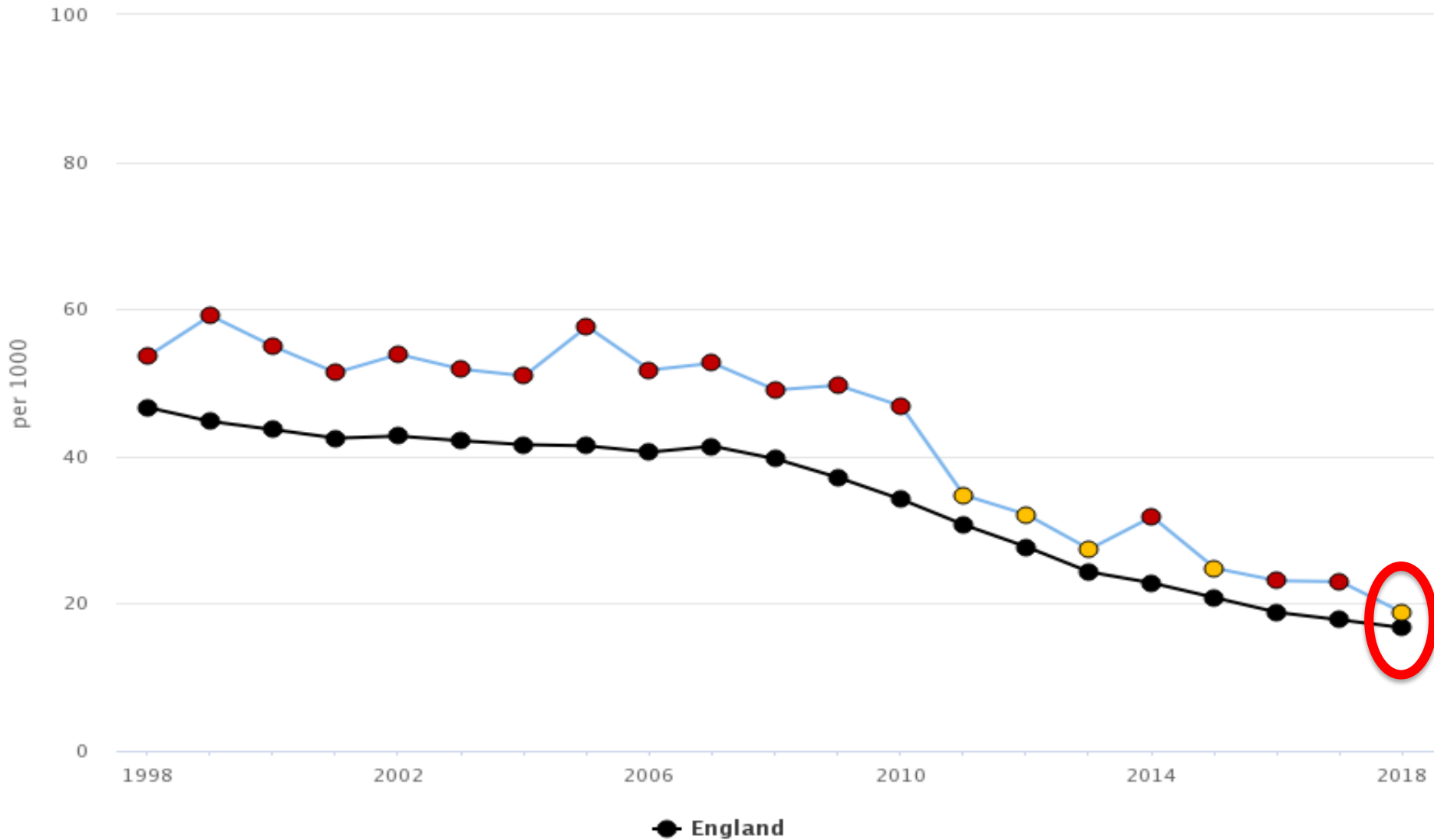


www.spectrumhealth.org.uk  
info@spectrum-cic.nhs.uk



Compared with benchmark: ● Better ● Similar ● Worse ○ Not compared

### Under 18s conception rate / 1,000 for Wigan



[www.spectrumhealth.org.uk](http://www.spectrumhealth.org.uk)  
[info@spectrum-cic.nhs.uk](mailto:info@spectrum-cic.nhs.uk)



Indicator	Period	England	Yorkshire and the Humber region	Barnsley	Bradford	Calderdale	Doncaster	East Riding of Yorkshire	Kingston upon Hull	Kirklees	Leeds	North East Lincolnshire	North Lincolnshire	North Yorkshire	Rotherham	Sheffield	Wakefield	York
Under 18s conception rate / 1,000	2018	16.7	19.6	26.3	18.4	16.7	22.6	14.6	29.8	14.7	23.8	26.7	21.8	12.8	20.8	19.3	20.5	16.1
Under 18s conceptions leading to abortion (%)	2018	53.0	46.4	50.5	36.5	44.8	43.6	51.9	41.4	60.2	46.0	48.6	37.3	50.8	42.2	43.0	53.7	60.0

# Service Model

- The under 25 female resident population, residing at a Barnsley postcode address
- Women who have had unprotected sex in the last 72 for Levonorgestrel (LNG) and 120 hours for Ulipristal (UPA).
- The copper intra-uterine device is the recommended, most effective method of post coital contraception, refer in to ISH but still give EHC.
- The provision of the appropriate medication should be based on Faculty for Reproductive and Sexual Health Guidelines CEU Clinical Guidance:



# The Medicines available

- Levonorgestrel (LNG) (1500mg), issued via Patient Group Direction.
- Ulipristal (UPA) 30mg issued as a P Medicine.



[www.spectrumhealth.org.uk](http://www.spectrumhealth.org.uk)  
[info@spectrum-cic.nhs.uk](mailto:info@spectrum-cic.nhs.uk)





# Payments

- There will be a reimbursement of the actual wholesale drug costs (NHS Tariff £5.20 for LNG and £14.05 for UPA + VAT @5%)
- A payment of £15/consultation for pharmacists involved in this scheme.



[www.spectrumhealth.org.uk](http://www.spectrumhealth.org.uk)  
[info@spectrum-cic.nhs.uk](mailto:info@spectrum-cic.nhs.uk)



# Who will administer/dispense the medication?

- Services need to be easily accessible
- Dispense or Administer?
- Ideally the consultation needs to be face to face but telephone/video consultation is acceptable if exceptional circumstances (disability, shielding, C19 symptoms/isolation).
- Open extended hours including evenings and weekends (this is not essential especially if you are in an area of high need).
- Locum pharmacists who feel they are competent to deliver EHC can sign the contract to deliver EHC in the pharmacy they are locum in.



[www.spectrumhealth.org.uk](http://www.spectrumhealth.org.uk)  
[info@spectrum-cic.nhs.uk](mailto:info@spectrum-cic.nhs.uk)



# What else for the patient?

- If the patient has been initiated on Emergency Contraception, the patient should be given advice on where/how to access condoms, STI risk, and on-going contraception risk, this discussion should be supported by a “Contraception Choices” sheet, and be consented for a referral to be made in to integrated sexual health services in order for there to be routine follow up after emergency contraception, (e.g. Menses, Pregnancy Test, STI testing, and on-going contraceptive needs met).



# What next for the patient?

- The patient should be consented for their details to be referred in to Sexual Health Services at Gateway Plaza and ensure they provide consent for SHS to contact them in 3 weeks by ISHs to ensure:
- They have obtained/recommended a reliable method of contraception
- They have had a period, if not they will need to do a pregnancy test.
- Consented for a chlamydia postal kit to be sent out
- Appointment for any further/on-going care if required



# Safeguarding

- If the patient is under 19 there will be an expectation that there is a safeguarding risk assessment in line with the national standards.
- If the patient is under 16 then an additional assessment of Fraser Competence will also be required.
- Referral in to the service is significantly more important with young people as it means we will have an audit trail of where the patient is attending and it prevents young people being trafficked around services by exploiters as it is on one central record.
- It is expected that the pharmacist will be up to date with their safeguarding level 2 mandatory training.



[www.spectrumhealth.org.uk](http://www.spectrumhealth.org.uk)  
[info@spectrum-cic.nhs.uk](mailto:info@spectrum-cic.nhs.uk)



# Referrals in to ISH

Referrals can be made by phone or by sending the consultation assessment form through to BISH via Pharmoutcomes



[www.spectrumhealth.org.uk](http://www.spectrumhealth.org.uk)  
[info@spectrum-cic.nhs.uk](mailto:info@spectrum-cic.nhs.uk)



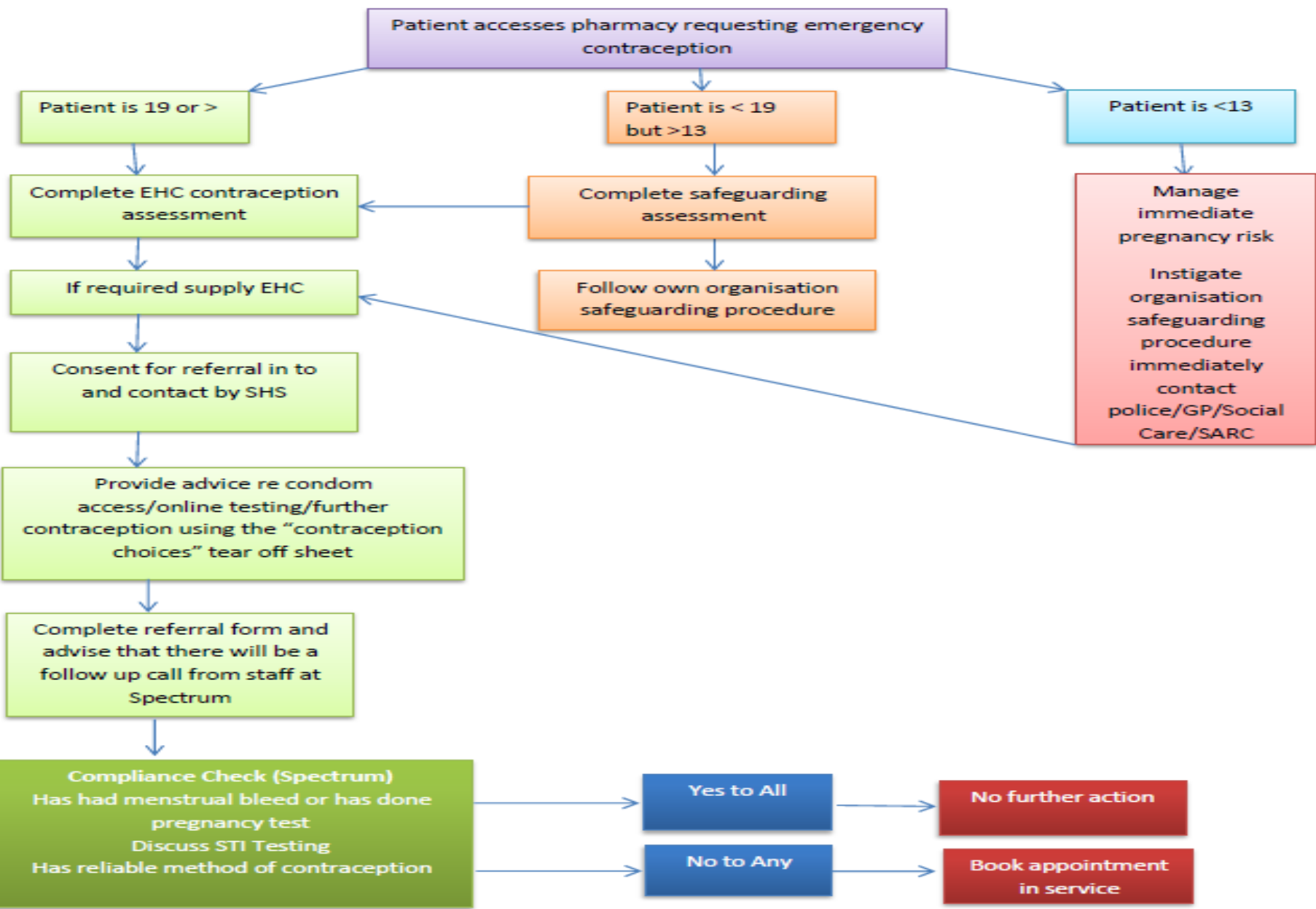
- The pharmacy wishes they can sign up to the C-Card Scheme which will involve some brief training and registration with the website, you are then able to order condoms as required through the website in order to provide to those young people accessing the service.
- To arrange training please contact the service 0800 055 6442 and ask to speak to a member of staff in relation to the C-Card Scheme.
- Chlamydia Screening Services



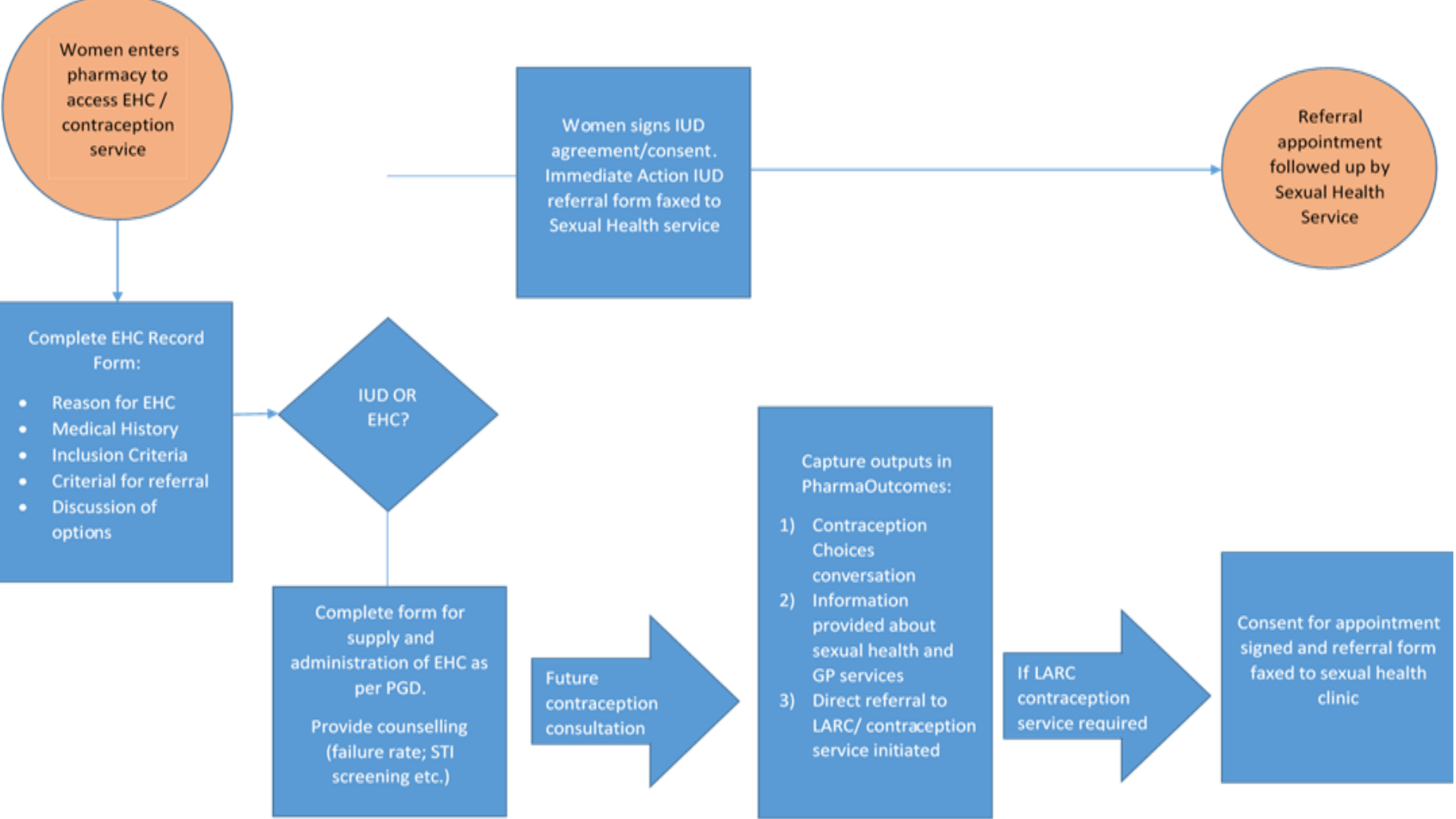
[www.spectrumhealth.org.uk](http://www.spectrumhealth.org.uk)  
[info@spectrum-cic.nhs.uk](mailto:info@spectrum-cic.nhs.uk)



## Level One (Pharmacy) Sexual Health Service Pathway







\*\*\*\*Referrals can be emailed to NHS.net account [schcic.bishadmin@nhs.net](mailto:schcic.bishadmin@nhs.net) in place of fax\*\*\*\*

# Questions



[www.spectrumhealth.org.uk](http://www.spectrumhealth.org.uk)  
[info@spectrum-cic.nhs.uk](mailto:info@spectrum-cic.nhs.uk)

